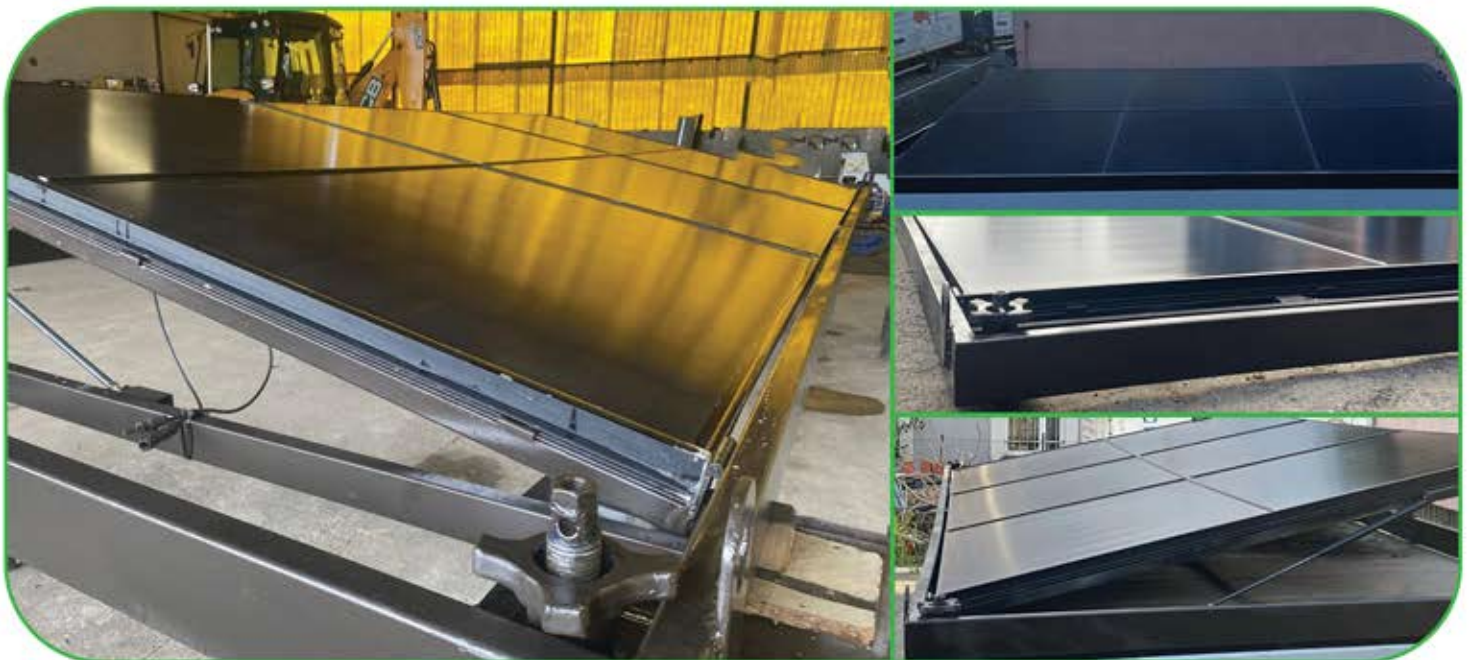


# WHY SOLAR CONTAINER ?

The **Solar Container** is unique in the world. It consists of a support frame attached to the container with hooks, and a fixing frame attached to the support frame with hinges. When extended onto the container, the fixing frame has an angle of 20 degrees (increased angle possible with the Solar Container Battery design). The raising and lowering of the fixing frame including panels is supported by two gas cylinders. The fixing frame is mechanically secured after unfolding to prevent it from folding up on its own. The **Solar Container** structure consists of six 400 [W] panels each, fixed to the fixing frame with a unique system that allows it to remain rigid not only during static operation, but also during transport. The **Solar Container** weighs only 420 [kg], which makes the installation easy to assemble and dismantle.



## ADVANTAGES OF THE SOLAR CONTAINER

- Easy assembly.
- Stackable.
- Easy to transport (1 unit together with the container) or 10 units on a vehicle; total weight of 4,200 [kg]).
- Solar Container as a base for use in various operating conditions.
- Opening angle of 20 degrees.
- Resistant to strong wind.
- No maintenance required.
- Has no harmful effects on the surrounding environment.
- High durability.
- Polish technological solution and execution.
- Simple mechanical design allowing for trouble-free operation.
- Aesthetic appearance.

## PARAMETERS

**Power:** 400 W (one panel) or 2,400 W

**Dimensions:** 590/235/12

**Weight:** 420 kg

**Output voltage:** 1 x 230 V AC or 3 x 230 V AC / 50 Hz

**Corrosion protection:** hot-dip galvanising, paint coating.

## Solar Container Enphase

Use with one or more containers creates an extremely secure system. Each panel is equipped with a micro-inverter, allowing the operation of each panel to be monitored in real time. Reduces service and installation costs. Requires mains power supply.

## Solar Container PV

Works in a system with an inverter. Several containers can be connected. Requires mains power supply.

## Solar Container Battery

This is the solution for those most demanding, where access to the mains is not possible. We create an independent container equipped with a 3 [kW] inverter and 3.84 [kWh] energy storage. This concept does not require connection to the grid. The containers cannot be combined.

## Solar Container Modul

Used for a large number of containers – allows modular linking of multiple containers equipped with the Solar Container system using a single inverter up to 60 kW.



## TRANSPORT

Solar Container is transported using vehicles equipped with HDS for the transportation of containers. Solar Containers can be used to transport a single structure on a container or multiple structures (max. 10) transported as independent installations to be assembled on containers at a designated location.

## ASSEMBLY

The Solar Container is a revolution in a rapid assembly. The structure is designed to be easy and simple to install on containers. The entire structure is attached to the container's fixtures, ensuring stability and strength during use. Assembly on the container is carried out using HDS or a forklift truck.

## STORAGE

The Solar Container is designed with as little footprint during storage as possible. The system allows up to 10 structures to be stacked on top of each other, which increases safety against damage and minimises the space required to store more structures.



ATC Solutions Sp. z o.o.  
60-164 Poznań  
ul. Kamienicka 11  
Tel.: +48 726 908 071  
E-mail: [biuro@atcsolutions.pl](mailto:biuro@atcsolutions.pl)  
[www.atcsolutions.p](http://www.atcsolutions.p)

We are representative of the company:

